

1 Teaching

Quality First Teaching

The curriculum will support pupils' learning and the finding and filling of gaps

Recovery Curriculum using Here We Are

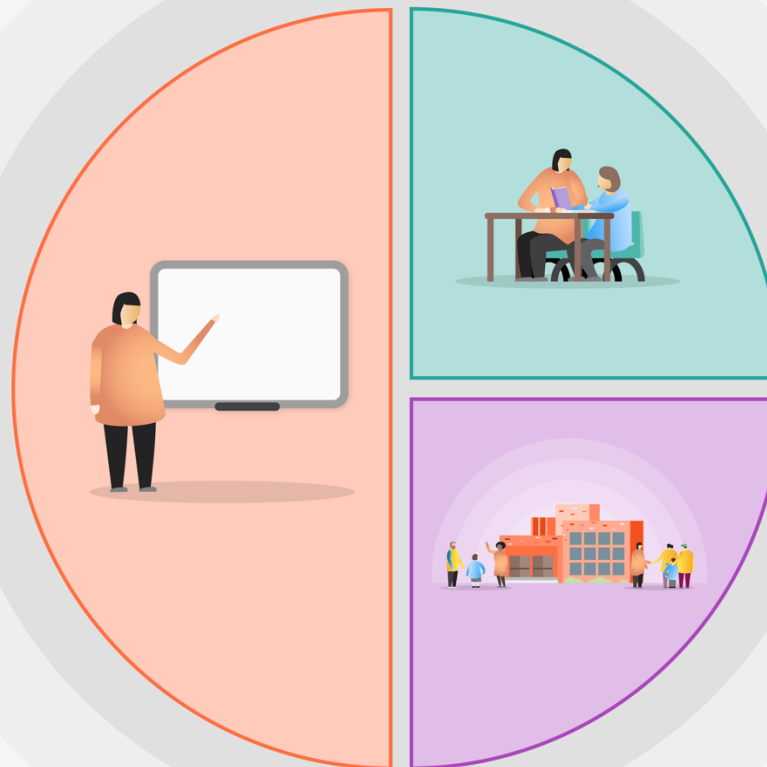
Remote learning plan will support pupils who need to self isolate.

Lost learning:

WR maths taught which includes built-in recap lessons/steps especially in number. Daily Intelligent Practice focusing on progressive key skills (Ready To Progress Document June 2020)

English and Foundation Subjects audit of lost learning to be fed into future teaching (could be next academic year)

Accelerate progress in phonics and reading comprehension: Daily Phonics for all FS-Year 3 (where needed); Phonically decodable reading books available for all early readers; wider choice of reading books for all.



2 Targeted academic support

Remote Learning for targeted children

Catch Up maths intervention for targeted year 5 children

NTP WR maths tuition for targeted (disadvantaged) year 5 and 6 children

EYFS and KS1 phonic interventions (RWI)

Y3- Y6 phonic intervention (Nessy)

3 Wider strategies

Forest School and outside pro sports for all

Whole School Curriculum for well-being – Here We Are

Targeted Nature-Nurture groups

Targeted fine and gross motor skills groups

Targeted SULP groups

Staff Training: systems and SEND School/Parent Communication

Workload reduction for staff